

Different Types of Projector Screens

Standard Manual Screens

- Popular type of projector screen because they are:
 - Versatile
 - Easy to use
 - Easy to install
- Wall mounted so they will stay in one place most of the time
- Manual pull down allows you to get the screen to the desired height then lock it in place
- More affordable than electric screens
- Suitable for schools, or anywhere which a projector is used frequently.



STANDARD CONNECT SQUARE SCREEN

Standard Electric Screens

- Less effort to open and close than a manual screen
- Makes a conference room look professional
- Makes a home cinema very impressive
- Some are available with remote controls for easier operation



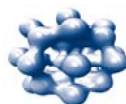
SESAME RECESSED VIDEO SCREEN

Framed Screens

- Designed for use in a permanent location
- Good for use in boardrooms, home theatres and any other frequent meeting space
- Permanently tensioned screen stretched around a frame, for a perfect image!



FRAMED SCREEN REAR PROJECTION



genite.com

Genite Group

Portable Projection Screens

- Can be carried to different places with ease
- Suitable for a variety of different situations, schools, conference facilities, hotels and even for entertainers on the go
- Flexible on-hand resource



**TRIPOD SCREEN
VIDEO**

Screen Surface

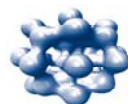
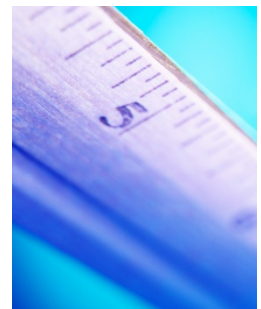
Different screen surfaces suit different tasks, below are some suggestions which may help you to select which projector screen you need.

Common Applications	Screen Surface Suggestions
Video - TV, VHS or DVD sources	Grey, white or matte white
35mm Slides (Using traditional slide or digital projector)	White or matte white
PowerPoint slides (New standard for high definition TV - less common)	White or matte white
Detailed spreadsheets or CAD designs (high res.)	White or matte white

If you want a screen for your home theatre or for a bright projector, you should select a screen with low gain. A low gain rating means that the light is reflected more uniformly from the centre to the edge of the viewing area.

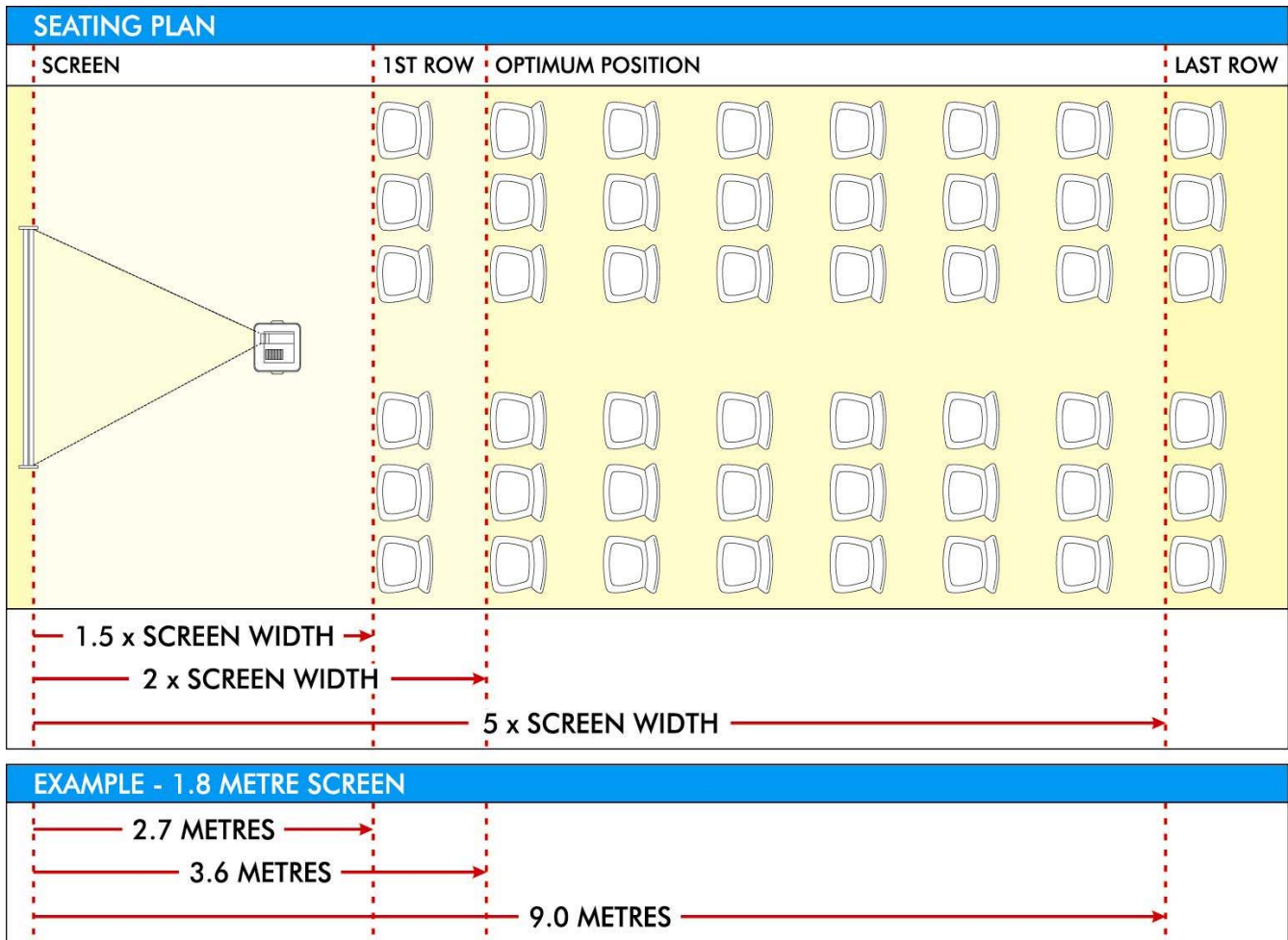
Screen Size

It is not always the largest screen size that is the optimum. If the screen is too big, then the viewer's eyes have to roam around the image to see the full picture. This can be very tiring, especially when watching a movie or similar. Too small, of course, and the image cannot be seen clearly or in enough detail, especially from the back of the room. There is a rule that is handy to use when selecting the right size screen below is an image that illustrates this:



genite.com

Genite Group



Choosing a Screen Format

1:1

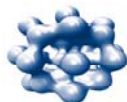
This is a square screen format. Out of the three formats this is probably the least used. It's most common use is with the old style overhead projectors.

4:3

This format is good for watching standard VHS tapes or DVDs; you can also still watch widescreen DVDs. This screen format is also good for playing video games and for computer presentations. Content for 4:3 is available in abundance.

16:9

If you wish to use your projector screen for HDTV viewing this screen format is perfect for you. If you will be watching mainly widescreen DVDs it is also suitable for this purpose. Widescreen images always look impressive especially in HD (high definition). Video games can also be used on this format if they specify they can and with a special adapter.



genite.com

Genite Group